

TIMS

Release Notes



TIMS 25.2 Feature Highlights

Employee Self Service APIs (ESS)

A series of APIs that make essential Employee Self Service (ESS) TIMS data available for integration with your external ESS systems (e.g. Blink).

These APIs will be available via a subscription – Reach out to a TIMS consultant for further details.

TIMS

Release Notes



Features and Enhancements

Feature name	Description
ESS APIs	A series of APIs that make essential Employee Self Service (ESS) TIMS data available for integration with your external ESS systems (e.g. Blink)
TIMS 2025 ATO compliance updates	Implementing the key changes, enhancements and new functionalities require to meet updated reporting, payroll and taxation requirements in accordance with the 2025 ATO compliance updates
Changes made to the Inventory User Groups	Created new Inventory User Groups with read only access to better control access for the Inventory module

TIMS

Release Notes



System Tweaks and Fixes

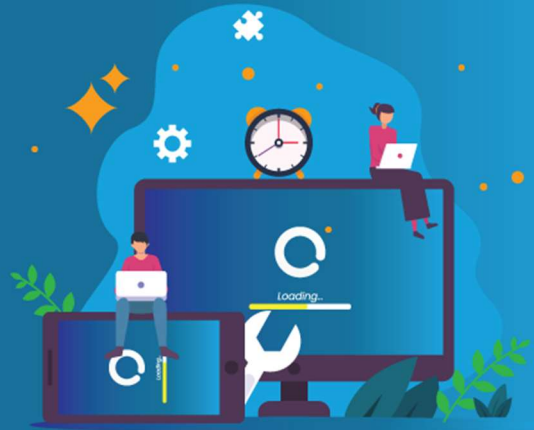
- Resolved an issue causing faults without sub-types to not appear in the workshop tab
- Tweaked the 'Set Timesheets from Charter Allocation' functionality to accurately order the timesheet lines by time
- Tweaked the way Chart Trips are cancelled to resolve an intermittent issue relating to the additional billing lines being created
- Tweaked the new employee form to populate the legal entity by default
- Resolved an issue in performance monitoring that was causing the disciplinary count to not appear
- Locked down charter invoices so they cannot be deleted or altered after printing/emailing
- Fixed an issue in the Debtor Ageing Summary report that was causing some values to appear as 0
- NZ Bus only - Updates to the Esker API relating to PO header, PO items, and vendor data feed

Technical uplift

- Java dependency updates
- ODBX Driver update
- JavaScript dependency update

TIMS

Release Notes



What's coming in TIMS 25.3?

Timesheet Approval Functionality

- New functionality to support your timesheet approval process. This feature will enable the time sheet approvers to review and approve timesheet lines, ensuring that approved entries remain unchanged without their notice or approval.

Shift Sheet Enhancements

- A collection of enhancements for the TIMS Shift Sheet to improve general usability for the day of operations users.